



# Saudi Telecom Company

presents

## Internet in the Kingdom of Saudi Arabia

By

John Wohnfurter  
Arthur Pennington

18 Oct 2000



# Agenda

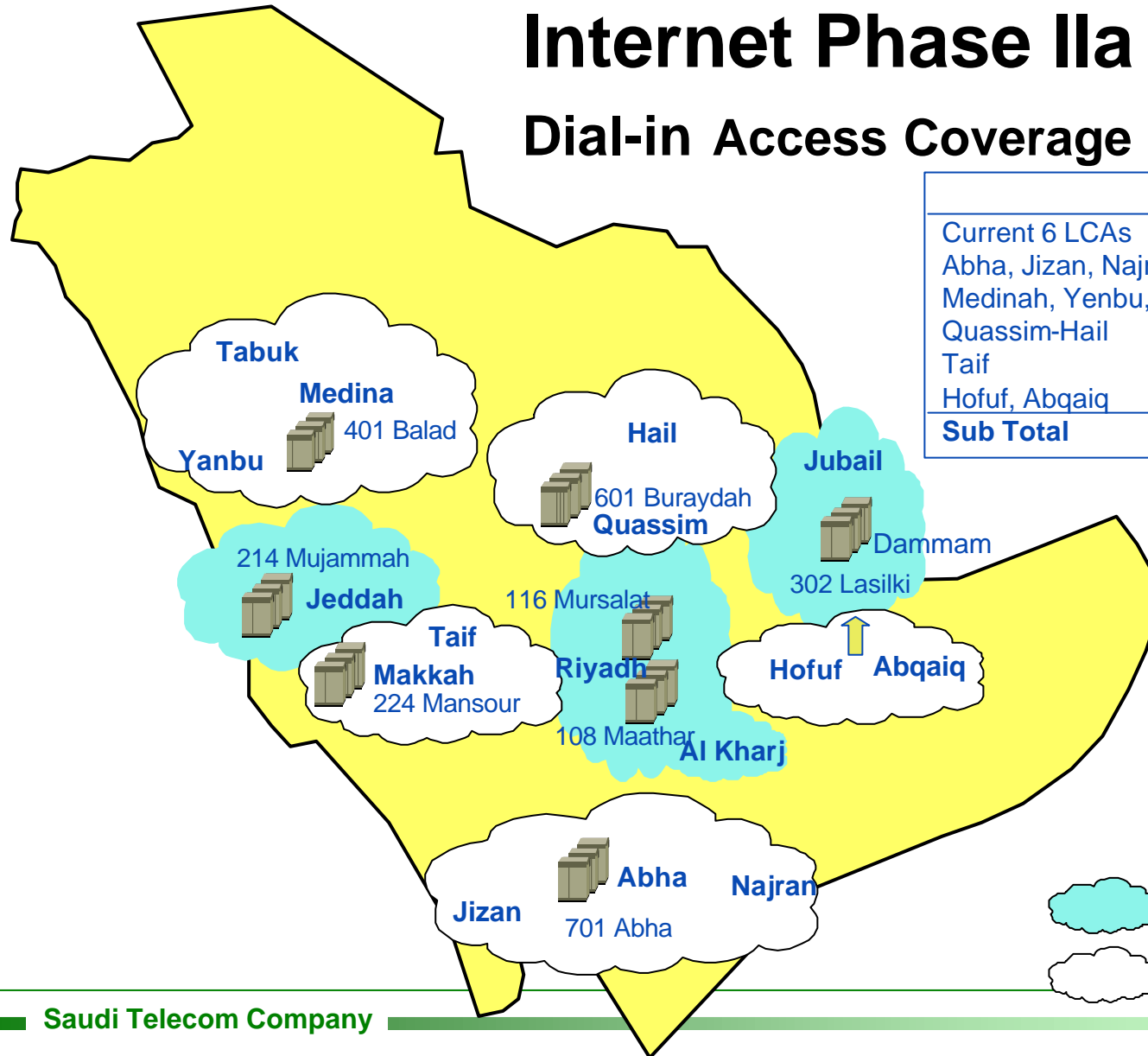
**Overview of Internet in KSA**

**ISP and Network Statistics**

# Internet Phase Ila

## Dial-in Access Coverage

	Phase I	Phase II
Current 6 LCAs	5,120	3,805
Abha, Jizan, Najran	-	2010
Medinah, Yenbu, Tabuk	-	1590
Quassim-Hail	-	1200
Taif	-	630
Hofuf, Abqaiq	-	510
<b>Sub Total</b>	<b>5,120</b>	<b>9,745</b>



**91% Dial-in coverage**  
**8 MegaPOPs**



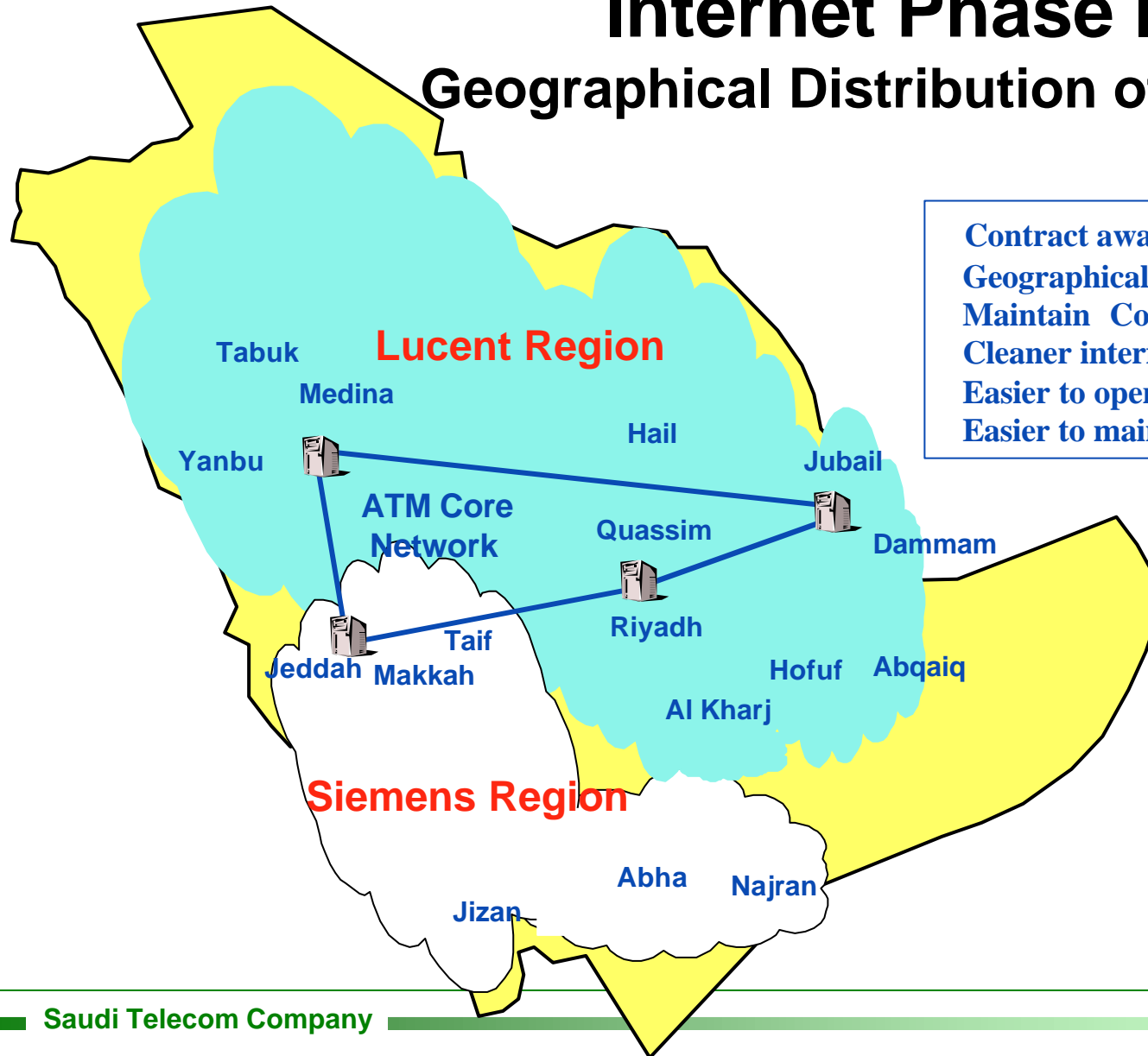
Phase I dial-in coverage



Phase IIa dial-in coverage

# Internet Phase IIb

## Geographical Distribution of Vendors



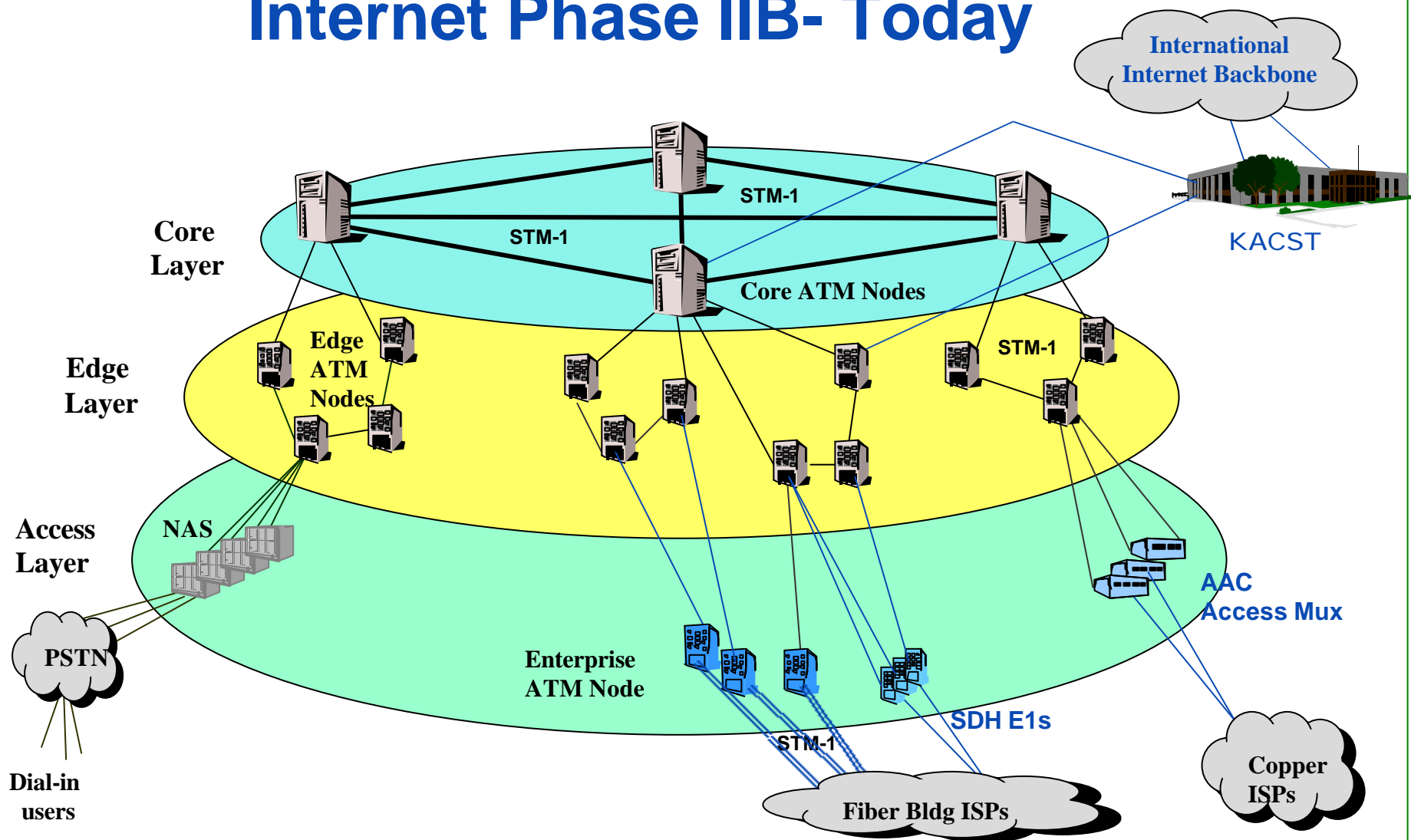
Contract awarded to Lucent and Siemens  
Geographical Distribution of the vendors  
Maintain Competition between vendors  
Cleaner interface between the vendors  
Easier to operate  
Easier to maintain



# Internet Key Projects

	Phase I	Phase IIa	Phase IIb
ATM Core Nodes	-	3	4
ATM Edge Nodes	4	4	57
Dial-in POPs	4	8	28
Dial-in Coverage	70%	91%	100%
ISP Access	E1	nxE1	NxE1
			Enterprise ATM
DDN Integration	-	-	Yes

# Internet Phase IIB- Today





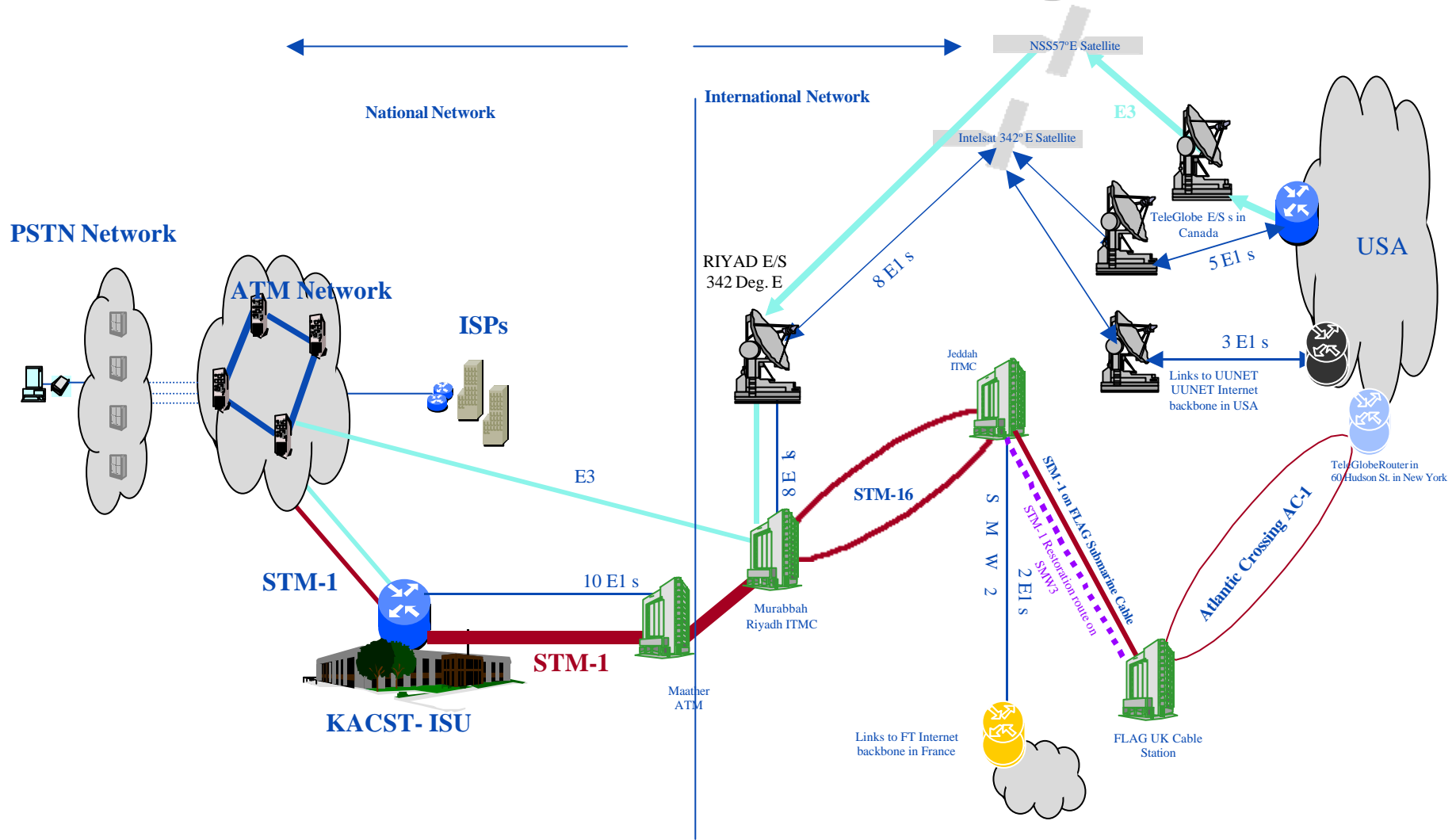
# ATM Switch locations

City	Site #	Exchange
Riyadh	101	Murabbah
Riyadh	102	Malaz
Riyadh	104	Manfouhah
Riyadh	105	Makkah Rd
Riyadh	106	Olaya
Riyadh	107	Khurais Rd.
Riyadh	108	Maather
Riyadh	108	Maather
Riyadh	109	Eraijja
Riyadh	111	Huttayn
Riyadh	112	Shaffah
Riyadh	113	Aziziah
Riyadh	114	Naseem
Riyadh	116	Mursalat
Riyadh	117	Misfa
Riyadh	119	Nasiriyah
Riyadh	121	Deerah
Riyadh	126	KKIA
Al Kharj	130	AL Kharj
Jeddah	201	Bab Makkah

City	Site #	Exchange
Jeddah	202	Rowais
Jeddah	203	Makkah Rd
Jeddah	204	Naziah
Jeddah	205	Salamah
Jeddah	206	Mahammadiayh
Jeddah	209	Mushrifah
Jeddah	212	Sharafiayh
Jeddah	214	Mujammah
Jeddah	218	Safa
Makkah	222	Biban
Makkah	223	Aziziyah
Makkah	224	Mansour
Taif	231	Markazi
Dammam	301	Bareed
Dammam	302	Lasilki
Dammam	303	Mutlaq
Khobar	304	Khobar
Qateef	307	Qateef
Dhahran	308	Dhahran
Dammam	309	Mujammah

City	Site #	Exchange
Hofuf	324	Hofuf
Jubail	334	Jubail
Jubail	342	Fanateer
Medina	401	Balad
Tabuk	405	Tabuk
Sakakah	409	Sakakah
Yanbu	416	Yanbu 1
Medina	417	Sultana
Abrar Ali	422	Abrar Ali
Yanbu	431	Yanbu 2
Buraidah	601	Buraidah
Qassim	602	Unayzah
Hail	611	Hail
Abha	701	Abha
Khamis Mushait	702	Khamis Mushait
Baha	712	Baha
Riyadh	106-43	Al Akaria
Riyadh	106-44	Al Andalus
Riyadh	106-45	Rosais
Riyadh	106-46	Creic
Riyadh	106-47	Faisaliah

# KACST International Configuration







## **ISP connections to the ATM**

**29 ISPs main locations are connected to the ATM network**  
**Average bandwidth is 6 Mbps per ISP**

**There are 5 Building in Riyadh that have Fiber**  
**14 ISPs are in these buildings**

**7 ISPs have STM1 connection to the ATM**  
**7 have not installed their Fiber Cable yet**

**15 ISP have POPs (point of presence outside the main location)**  
**Average bandwidth at the POP is 256Kbps**



# ISP Average Statistics

**There are 29 active ISPs**

**The AVERAGE statistics for these ISPs are;**

**An AVERAGE of 719 dial in ports per ISP**

**An AVERAGE of 7,224 dial in subscriber**

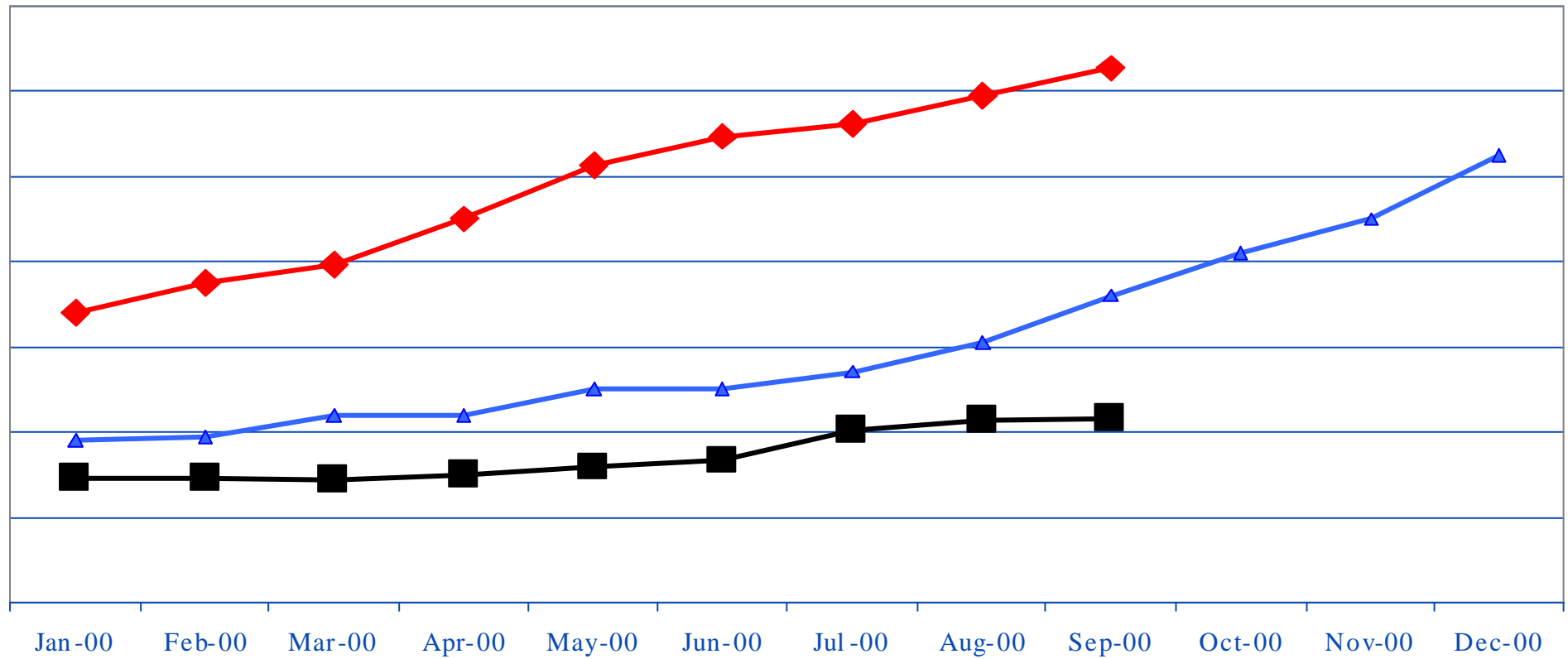
**An AVERAGE of 21 Leased Line corporate customer**

**An AVERAGE of 2.1 Mbps International bandwidth**



# Dial In Subscribers

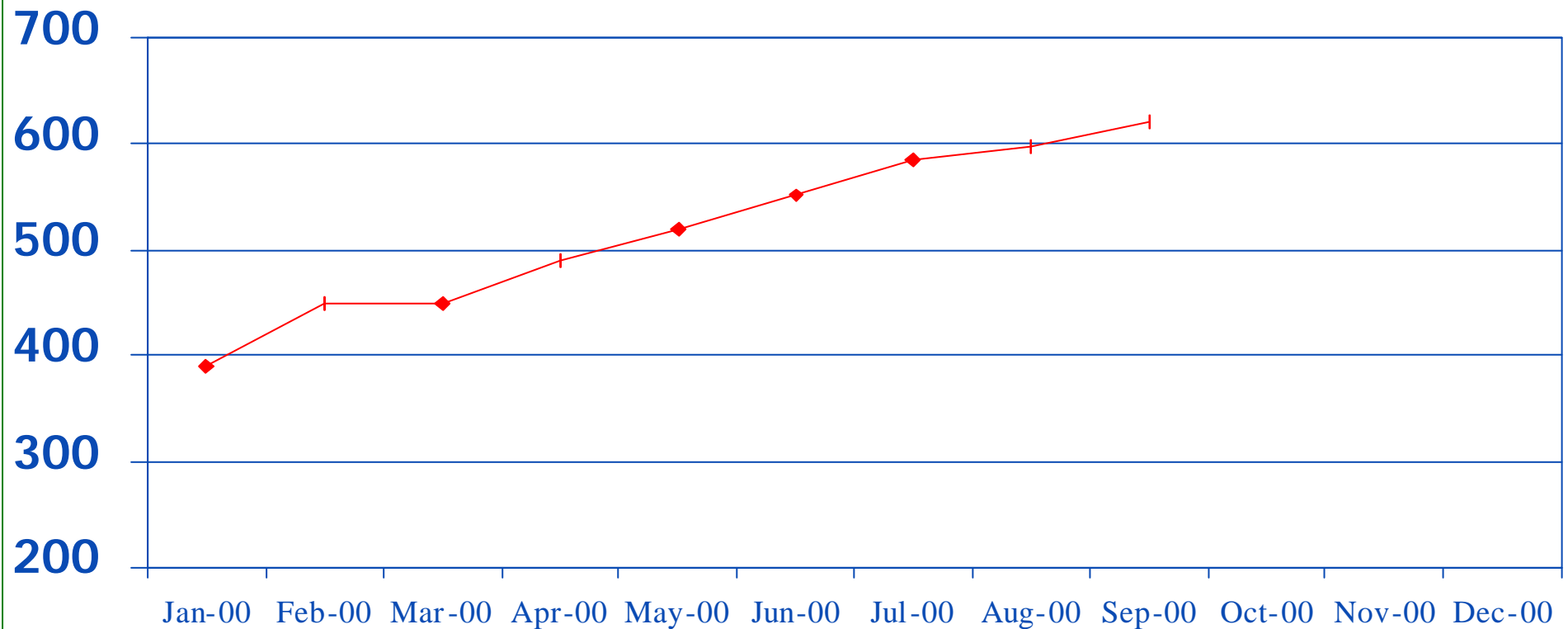
◆ Subscribers ■ Ports in Service ▲ Ports Available





# Corporate Customer Leased Lines

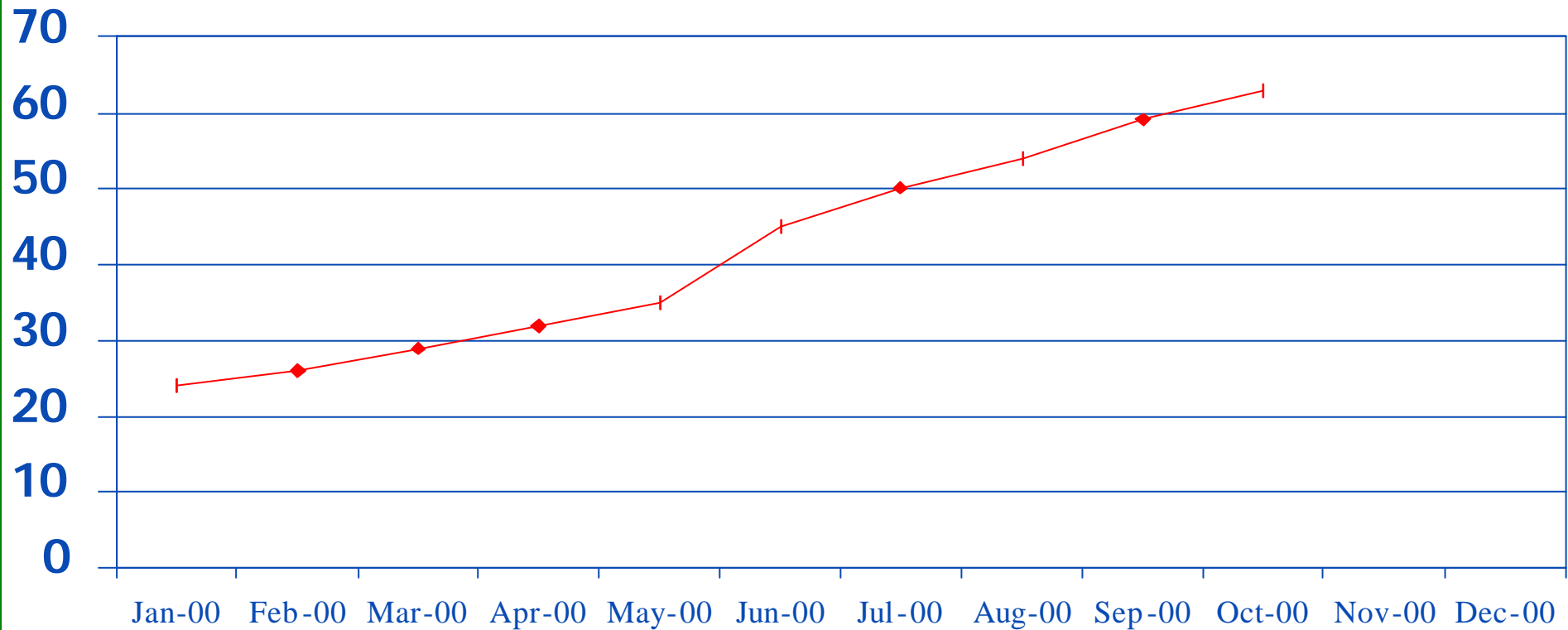
Leased Lines





# ISP to KACST Bandwidth

◆ Total Int'l Bandwidth





# Internet Cafes Connected by Leased Line

Internet Cafes

